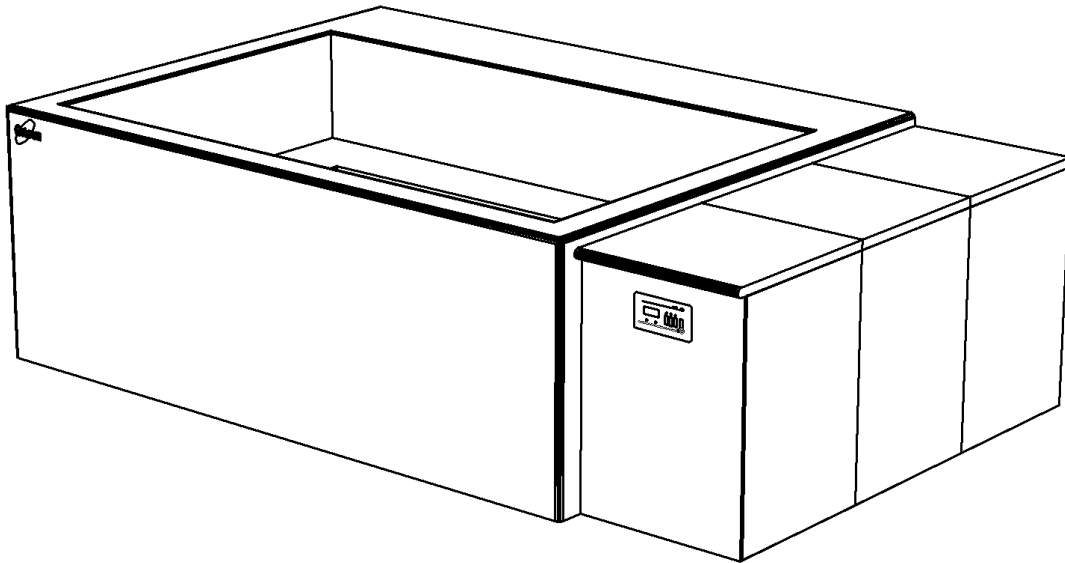


Model 7921 Warm Hydrotherapy Console

A versatile and efficient hydrotherapy system built to Utah Administrative Code 63G-3-102(5). Its stainless steel tank offers seated and over-the-waist immersion. Water temperature is precisely maintained with an internal heating system. This self-contained unit fits through a 42" x 96" doorway and can be installed in new or existing hydrotherapy areas with minimum site preparation.

Specifications:

Weight / Tank Empty	2,750 Pounds
Weight / Tank Full	7,994 Pounds
Tank Size	96" L x 60" W x 34" D
Tank Volume	628 Gallons
Tank Surface Area	40 Square Feet
Tank Perimeter	26 Feet
Tank Construction	12 Gauge, Type 304 Stainless Steel
Frame Size	40" H x 84" W x 135" L
Water Temperature Range	70° F to 110° F
Electrical Supply	208 Volt, Three-Phase, 60 Hertz
Full Load Amperage	77 Amps Max
Circuit Breaker	3 Pole, 100 Amp GFCI Supplied by Customer
Cold Water Supply	Pipe Size = ¾" Copper PSI = 20 Min. 80 Max.
Gravity Drain Outlet	Pipe Size = 1.5" Copper Max Flow = 61 GPM



Stainless Steel Tanks

The tank is 96" long, 60" wide, and 40" deep, with a capacity of 628 gallons. It is formed and welded from 12-gauge Type 304 stainless steel into a seamless unit with coved corners for easy cleaning. This high-quality stainless-steel tank assures maximum sanitation and provides a lifetime of durable service.

Gravity Drain

A large 1-1/2" gravity drain outlet located in the center of the stainless-steel tank with creases directing water to the outlet and a hand operated ball valve that simplifies draining and cleaning.

Water Level Control

The tank has automatic water level controls to maintain a constant water level. These eliminate manual filling, replace water volume displaced by immersion, and helps refresh the tank.

Recirculation System

All required equipment is NSF approved and piping is potable water rated. The recirculation system includes a 100 sq. ft. cartridge filter, a 1/2 HP self-priming pump with flow sensing switch and electrical interlock, a VGB suction outlets, an automatic chemical feed system, a design flow rate meter, pressure/ vacuum gauge, and a valve for adjustment of the system.

NSF Pump – 1/2 HP	Hayward SP2600X5 (18 GPM @ 40 ft. TDH, 48 GPM Max)	
NSF Filter – 100 Sq. Ft.	Hayward C100s (35 GPM Design Flow Rate)	
NSF Chemical Feeder	Hayward CL220 w/ Pentair R172080 Flow Meter	
NSF Flow Meter	Flow Vis FV-C-15	
Suction Outlets	Waterway 640-3570S	
UL 24CPH Heater	Coates 32024CPH	
Adjustable Inlets	Waterway - Body: 210-5860, Jet w/1/2" Dia. Orifice: 210-6040	
Design Flow Rate	35 GPM	
Flow Velocity	Per Suction = 1.8 ft/s	Per Jet = 9.5 ft/s
Turnover in 8 Hours	16,800 Gallons	
Turnover Rate	17.9 min.	

Temperature Controls

An electronic control accurately maintains and digitally displays water temperature that is adjustable. The tank is adjustable from 70°F to 110°F. Temperature is measured and can be set within 0.1°F. A Press-To-Set button displays the set point temperature and adjustment is made with a tamper proof screwdriver slot.

Foamed-In-Place Insulation

At least six inches of foamed-in-place polyurethane insulation surrounds and supports the tank. This exceptional insulation significantly reduces heat loss. CRYOTherm saves with energy and water savings when compared to conventional whirlpools.

Optional Corian Logo Inlays

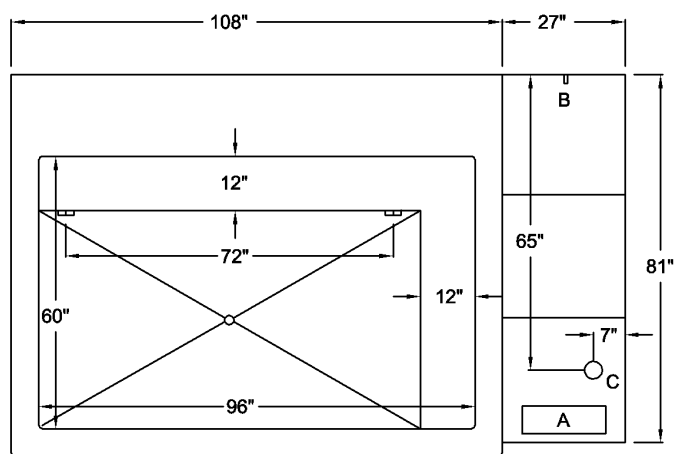
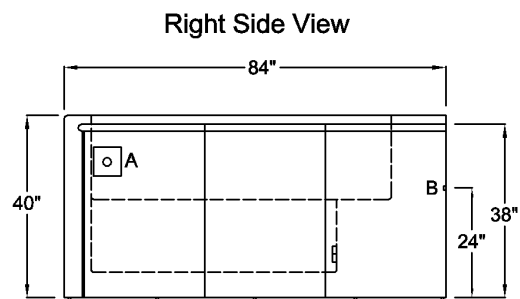
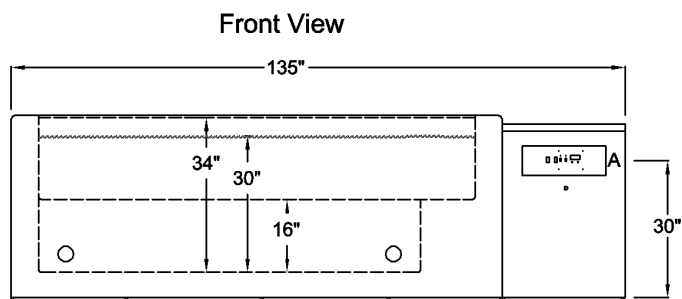
Logo inlay pricing is based on the number of Corian colors required. Your logo is carved into the Corian exterior with a CNC router. Individual logo pieces are also carved from the desired Corian color(s) and inlaid to create your custom graphic.

Installation

Delivery, installation supervision, and field-testing are provided with the CRYOTherm Hydrotherapy Console.



Specifications

**A = Electrical Connection**

208 Volt, 60 Hertz, Single Phase 4-Wire
Rating at Full Load = 77 Amp Max
* Circuit Breaker = 3-Pole, 100 Amp, GFCI
* Disconnect Switch

(* Supplied by Customer)

B = Water Supply Connection

Pipe Size = 3/4 FPT Brass
Water Pressure = 20 PSI Min. 80 PSI Max.
Water Temperature = 45°F Min. 80°F Max.
* RPZ Backflow Preventer

(* Supplied by Customer)

FDA Listed Medical Device**Optional**

- Corian Team Logo Inlay
- Third Party Field Evaluation

C = Drain Outlet

Pipe Size = 1-1/2" Copper
Flow = 40 GPM
* Floor Sink with 4-Inch drain is recommended

(* Supplied by Customer)



One-Year Warranty

The CRYOTherm warranty applies to purchaser and any subsequent owner. Grimm Scientific Industries, Inc. (warrantor) warrants this product to be free from defects in material and workmanship under normal use for one year from the date the product is installed. The warrantor may opt to replace the product, rather than repair it. This warranty does not cover damage resulting from accidents, improper use, or maintenance of this product, and in no case, shall the warrantor's liability exceed the original purchase price paid for the product. This warranty is expressly in lieu of all other express warranties.

Contact Us:

Grimm Scientific Industries, Inc
P.O. Box 2143
Marietta, OH 45750
Phone....800-223-5395
Fax.....740-374-5745
E-mail....info@grimmscientific.com

